

**UNION
WALK**

**AT SOUTHALL
WATERSIDE**

Newell House



**CLARION
HOUSING**

1 BEDROOM SUITE

SUITE

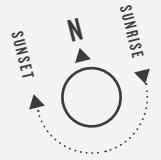
EG-03

TOTAL AREA

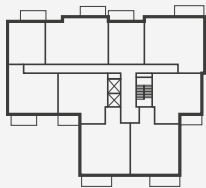
37.3 SQ M 402.0 SQ FT

TERRACE AREA

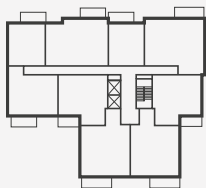
7.1 SQ M 76.4 SQ FT



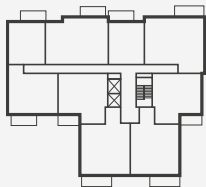
FIFTH FLOOR



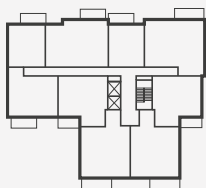
FOURTH FLOOR



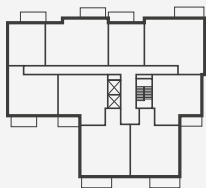
THIRD FLOOR



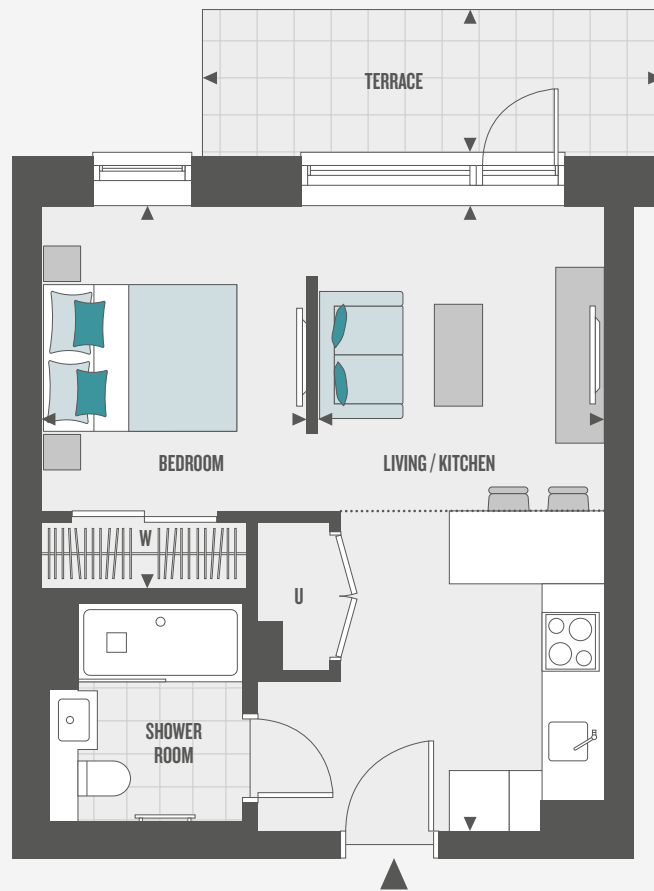
SECOND FLOOR



FIRST FLOOR



GROUND FLOOR



ROOM DIMENSIONS

Living/Kitchen	2.96m x 6.43m	9' 8" x 21' 1"
Bedroom	2.75m x 3.95m	9' 0" x 12' 11"
Terrace	4.73m x 1.50m	15' 6" x 4' 11"

KEY

- ◄► Measurement Points
- W Wardrobe
- C Cupboard
- U Utility Cupboard
- Bulkhead

Floorplans shown for Union Walk are for approximate measurements only. Exact layouts and sizes may vary. All measurements may vary within a tolerance of 5% and are to the maximum room dimensions. The dimensions are not intended to be used for carpet sizes, appliance sizes or items of furniture. Furniture layouts are indicative only. Kitchen layout indicative only. Please ask Sales Executive for further information.

**UNION
WALK**

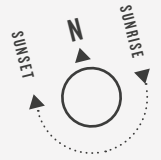
**AT SOUTHALL
WATERSIDE**

Newell House



**CLARION
HOUSING**

1 BEDROOM SUITE



SUITES

E1-03, E1-05*, E2-03, E2-05*,
E3-03, F3-05*, E4-03, E4-05*,
E5-03 & E5-05*

TOTAL AREA

37.3 SQ M 402.0 SQ FT

BALCONY AREA

6.0 SQ M 65.2 SQ FT

*PLOTS ARE HANDED

FIFTH FLOOR



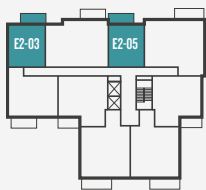
FOURTH FLOOR



THIRD FLOOR



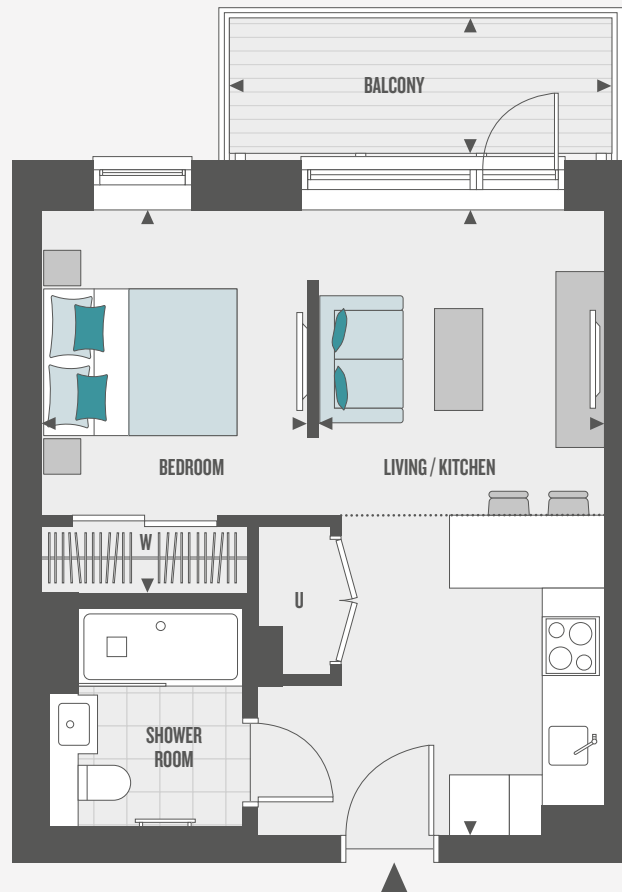
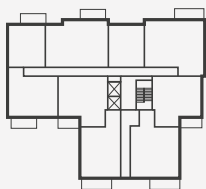
SECOND FLOOR



FIRST FLOOR



GROUND FLOOR



ROOM DIMENSIONS

Living/Kitchen	2.96m x 6.43m	9' 8" x 21' 1"
Bedroom	2.75m x 3.95m	9' 0" x 12' 11"
Balcony	4.04m x 1.50m	13' 3" x 4' 11"

KEY

- ◄► Measurement Points
- W Wardrobe
- C Cupboard
- U Utility Cupboard
- Bulkhead

Floorplans shown for Union Walk are for approximate measurements only. Exact layouts and sizes may vary. All measurements may vary within a tolerance of 5% and are to the maximum room dimensions. The dimensions are not intended to be used for carpet sizes, appliance sizes or items of furniture. Furniture layouts are indicative only. Kitchen layout indicative only. Please ask Sales Executive for further information.

**UNION
WALK**

**AT SOUTHALL
WATERSIDE**

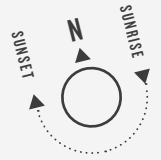
Newell House



**CLARION
HOUSING**

NEWELL HOUSE

**I BEDROOM
APARTMENT**



APARTMENT

EG-02

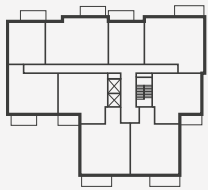
TOTAL AREA

50.2 SQ M 540.6 SQ FT

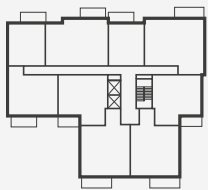
TERRACE AREA

6.2 SQ M 67.7 SQ FT

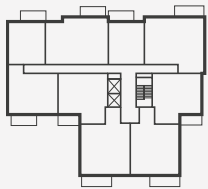
FIFTH FLOOR



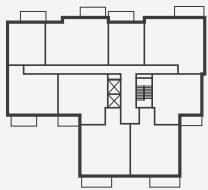
FOURTH FLOOR



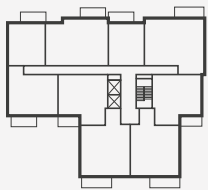
THIRD FLOOR



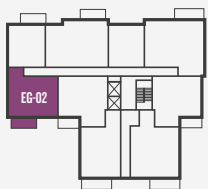
SECOND FLOOR



FIRST FLOOR



GROUND FLOOR



ROOM DIMENSIONS

Kitchen	2.29m x 2.82m	7' 6" x 9' 3"
Living/Dining	4.03m x 4.75m	13' 2" x 15' 7"
Bedroom	3.70m x 3.00m	12' 1" x 9' 10"
Terrace	4.20m x 1.50m	13' 9" x 4' 11"

KEY

- ◄► Measurement Points
- W Wardrobe
- C Cupboard
- U Utility Cupboard

Floorplans shown for Union Walk are for approximate measurements only. Exact layouts and sizes may vary. All measurements may vary within a tolerance of 5% and are to the maximum room dimensions. The dimensions are not intended to be used for carpet sizes, appliance sizes or items of furniture. Furniture layouts are indicative only. Kitchen layout indicative only. Please ask Sales Executive for further information.

**UNION
WALK**

**AT SOUTHALL
WATERSIDE**

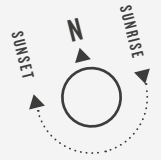
Newell House



**CLARION
HOUSING**

NEWELL HOUSE

I BEDROOM APARTMENT



APARTMENTS

E1-02, E2-02, E3-02,
E4-02 & E5-02

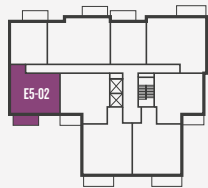
TOTAL AREA

50.2 SQ M 540.6 SQ FT

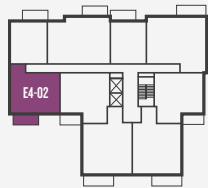
BALCONY AREA

6.0 SQ M 65.2 SQ FT

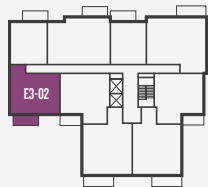
FIFTH FLOOR



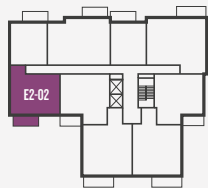
FOURTH FLOOR



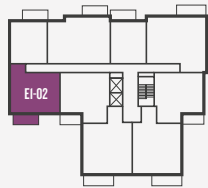
THIRD FLOOR



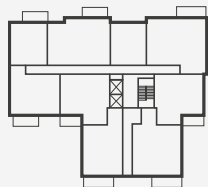
SECOND FLOOR



FIRST FLOOR



GROUND FLOOR



ROOM DIMENSIONS

Kitchen	2.29m x 2.82m	7' 6" x 9' 3"
Living/Dining	4.03m x 4.75m	13' 2" x 15' 7"
Bedroom	3.70m x 3.00m	12' 1" x 9' 10"
Balcony	4.04m x 1.50m	13' 3" x 4' 11"

KEY

- ◄► Measurement Points
- W Wardrobe
- C Cupboard
- U Utility Cupboard

Floorplans shown for Union Walk are for approximate measurements only. Exact layouts and sizes may vary. All measurements may vary within a tolerance of 5% and are to the maximum room dimensions. The dimensions are not intended to be used for carpet sizes, appliance sizes or items of furniture. Furniture layouts are indicative only. Kitchen layout indicative only. Please ask Sales Executive for further information.

**UNION
WALK**

**AT SOUTHALL
WATERSIDE**

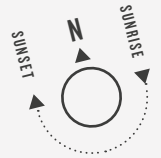
Newell House



**CLARION
HOUSING**

NEWELL HOUSE

1 BEDROOM APARTMENT



APARTMENT

EG-01

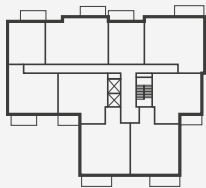
TOTAL AREA

51.9 SQ M 559.5 SQ FT

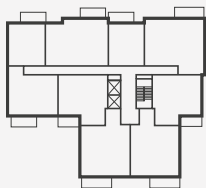
TERRACE AREA

5.0 SQ M 54.1 SQ FT

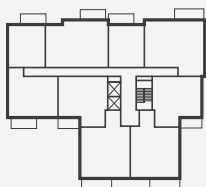
FIFTH FLOOR



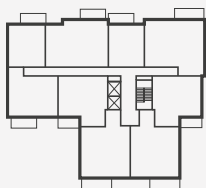
FOURTH FLOOR



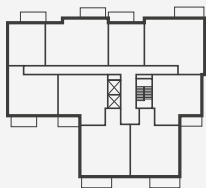
THIRD FLOOR



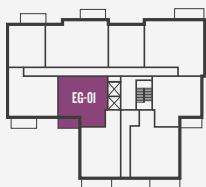
SECOND FLOOR



FIRST FLOOR



GROUND FLOOR



ROOM DIMENSIONS

Kitchen	3.36m x 2.29m	11' 0" x 7' 6"
Living/Dining	4.21m x 3.80m	13' 10" x 12' 6"
Bedroom	2.96m x 4.00m	9' 8" x 13' 1"
Terrace	3.35m x 1.50m	11' 0" x 4' 11"

KEY

- ◀▶ Measurement Points
- W Wardrobe
- C Cupboard
- U Utility Cupboard

Floorplans shown for Union Walk are for approximate measurements only. Exact layouts and sizes may vary. All measurements may vary within a tolerance of 5% and are to the maximum room dimensions. The dimensions are not intended to be used for carpet sizes, appliance sizes or items of furniture. Furniture layouts are indicative only. Kitchen layout indicative only. Please ask Sales Executive for further information.

**UNION
WALK**

**AT SOUTHALL
WATERSIDE**

Newell House



**CLARION
HOUSING**

NEWELL HOUSE

1 BEDROOM APARTMENT

APARTMENTS

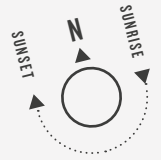
E1-01, E2-01, E3-01,
E4-01 & E5-01

TOTAL AREA

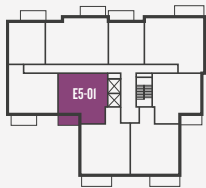
51.9 SQ M 559.5 SQ FT

BALCONY AREA

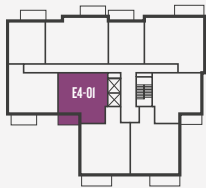
5.0 SQ M 53.8 SQ FT



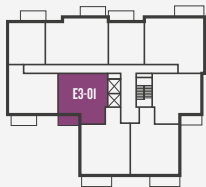
FIFTH FLOOR



FOURTH FLOOR



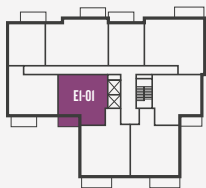
THIRD FLOOR



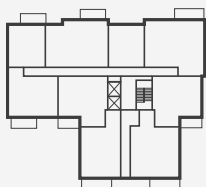
SECOND FLOOR



FIRST FLOOR



GROUND FLOOR



ROOM DIMENSIONS

Kitchen	3.36m x 2.29m	11' 0" x 7' 6"
Living/Dining	4.21m x 3.80m	13' 10" x 12' 6"
Bedroom	2.96m x 4.00m	9' 8" x 13' 1"
Balcony	3.33m x 1.50m	10' 11" x 4' 11"

KEY

- ◄► Measurement Points
- W Wardrobe
- C Cupboard
- U Utility Cupboard

Floorplans shown for Union Walk are for approximate measurements only. Exact layouts and sizes may vary. All measurements may vary within a tolerance of 5% and are to the maximum room dimensions. The dimensions are not intended to be used for carpet sizes, appliance sizes or items of furniture. Furniture layouts are indicative only. Kitchen layout indicative only. Please ask Sales Executive for further information.

**UNION
WALK**

**AT SOUTHALL
WATERSIDE**

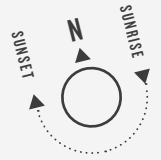
Newell House



**CLARION
HOUSING**

NEWELL HOUSE

1 BEDROOM APARTMENT



APARTMENT

EG-06

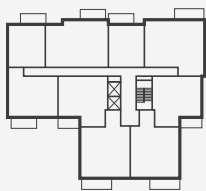
TOTAL AREA

51.6 SQ M 556.0 SQ FT

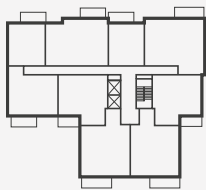
TERRACE AREA

5.1 SQ M 55.7 SQ FT

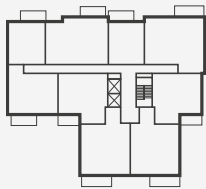
FIFTH FLOOR



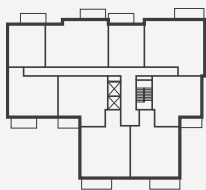
FOURTH FLOOR



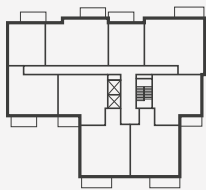
THIRD FLOOR



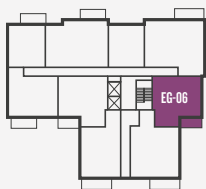
SECOND FLOOR



FIRST FLOOR



GROUND FLOOR



ROOM DIMENSIONS

Kitchen	3.34m x 2.29m	10' 11" x 7' 6"
Living/Dining	4.19m x 3.80m	13' 9" x 12' 6"
Bedroom	2.94m x 4.00m	9' 8" x 13' 1"
Terrace	3.45m x 1.50m	11' 4" x 4' 11"

KEY

- ◄► Measurement Points
- W Wardrobe
- C Cupboard
- U Utility Cupboard

Floorplans shown for Union Walk are for approximate measurements only. Exact layouts and sizes may vary. All measurements may vary within a tolerance of 5% and are to the maximum room dimensions. The dimensions are not intended to be used for carpet sizes, appliance sizes or items of furniture. Furniture layouts are indicative only. Kitchen layout indicative only. Please ask Sales Executive for further information.

**UNION
WALK**

**AT SOUTHALL
WATERSIDE**

Newell House



**CLARION
HOUSING**

NEWELL HOUSE

1 BEDROOM APARTMENT

APARTMENTS

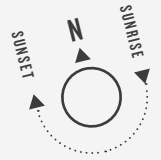
E1-07, E2-07, E3-07,
E4-07 & E5-07

TOTAL AREA

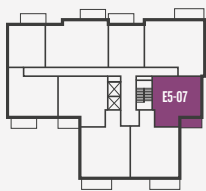
51.6 SQ M 556.0 SQ FT

BALCONY AREA

5.0 SQ M 53.8 SQ FT



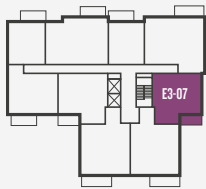
FIFTH FLOOR



FOURTH FLOOR



THIRD FLOOR



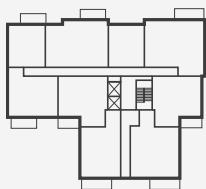
SECOND FLOOR



FIRST FLOOR



GROUND FLOOR



ROOM DIMENSIONS

Kitchen	3.34m x 2.29m	10' 11" x 7' 6"
Living/Dining	4.19m x 3.80m	13' 9" x 12' 6"
Bedroom	2.94m x 4.00m	9' 8" x 13' 1"
Balcony	3.33m x 1.50m	10' 11" x 4' 11"

KEY

- ◄► Measurement Points
- W Wardrobe
- C Cupboard
- U Utility Cupboard

Floorplans shown for Union Walk are for approximate measurements only. Exact layouts and sizes may vary. All measurements may vary within a tolerance of 5% and are to the maximum room dimensions. The dimensions are not intended to be used for carpet sizes, appliance sizes or items of furniture. Furniture layouts are indicative only. Kitchen layout indicative only. Please ask Sales Executive for further information.

**UNION
WALK**

**AT SOUTHALL
WATERSIDE**

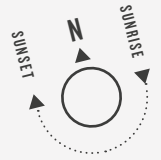
Newell House



**CLARION
HOUSING**

NEWELL HOUSE

1 BEDROOM APARTMENT



APARTMENT

EG-08

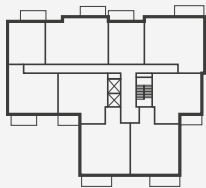
TOTAL AREA

53.1 SQ M 571.6 SQ FT

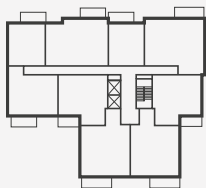
TERRACE AREA

8.9 SQ M 96.5 SQ FT

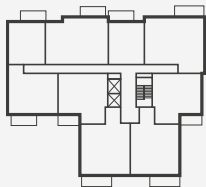
FIFTH FLOOR



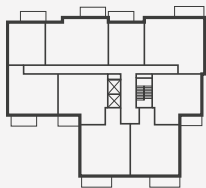
FOURTH FLOOR



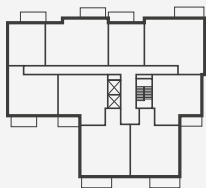
THIRD FLOOR



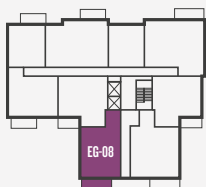
SECOND FLOOR



FIRST FLOOR



GROUND FLOOR



ROOM DIMENSIONS

Kitchen	3.73m x 2.12m	12' 2" x 10' 4"
Living/Dining	6.04m x 4.56m	19' 10" x 14' 11"
Bedroom	3.74m x 3.16m	12' 3" x 10' 4"
Terrace	4.94m x 1.82m	16' 2" x 5' 11"

KEY

- ◄► Measurement Points
- W Wardrobe
- C Cupboard
- U Utility Cupboard

Floorplans shown for Union Walk are for approximate measurements only. Exact layouts and sizes may vary. All measurements may vary within a tolerance of 5% and are to the maximum room dimensions. The dimensions are not intended to be used for carpet sizes, appliance sizes or items of furniture. Furniture layouts are indicative only. Kitchen layout indicative only. Please ask Sales Executive for further information.

**UNION
WALK**

**AT SOUTHALL
WATERSIDE**

Newell House



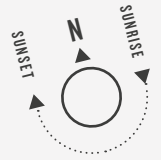
**CLARION
HOUSING**

2 BEDROOM APARTMENT

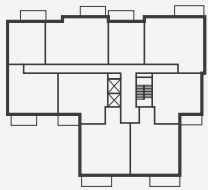
APARTMENT
EG-07

TOTAL AREA
65.2 SQ M 702.3 SQ FT

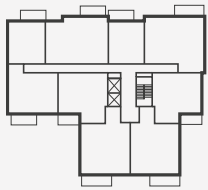
TERRACE AREA
11.1 SQ M 119.8 SQ FT



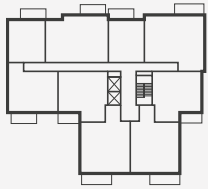
FIFTH FLOOR



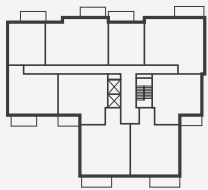
FOURTH FLOOR



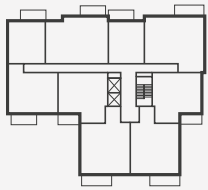
THIRD FLOOR



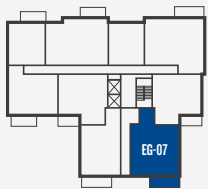
SECOND FLOOR



FIRST FLOOR



GROUND FLOOR



ROOM DIMENSIONS

Kitchen	3.14m x 2.46m	10' 3" x 8' 0"
Living/Dining	4.33m x 2.50m	14' 2" x 8' 2"
Master Bedroom	3.14m x 3.70m	10' 3" x 12' 1"
Bedroom 2	3.21m x 2.75m	10' 6" x 9' 0"
Terrace	6.17m x 1.81m	20' 2" x 5' 11"

KEY

- ◄► Measurement Points
- W Wardrobe
- C Cupboard
- U Utility Cupboard

Floorplans shown for Union Walk are for approximate measurements only. Exact layouts and sizes may vary. All measurements may vary within a tolerance of 5% and are to the maximum room dimensions. The dimensions are not intended to be used for carpet sizes, appliance sizes or items of furniture. Furniture layouts are indicative only. Kitchen layout indicative only. Please ask Sales Executive for further information.

**UNION
WALK**

**AT SOUTHALL
WATERSIDE**

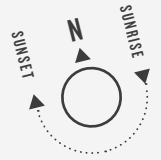
Newell House



**CLARION
HOUSING**

NEWELL HOUSE

2 BEDROOM APARTMENT



APARTMENTS

E1-08*, E1-09, E2-08*, E2-09, E3-08*, E3-09, E4-08*, E4-09, E5-08* & E5-09

TOTAL AREA

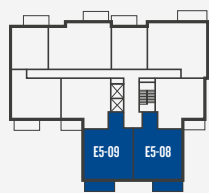
65.2 SQ M 702.3 SQ FT

BALCONY AREA

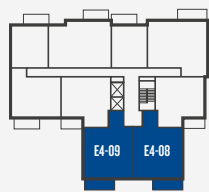
7.0 SQ M 75.3 SQ FT

*PLOTS ARE HANDED

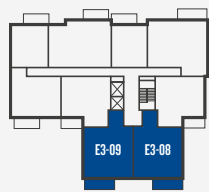
FIFTH FLOOR



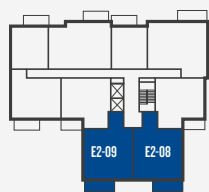
FOURTH FLOOR



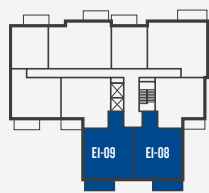
THIRD FLOOR



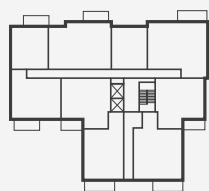
SECOND FLOOR



FIRST FLOOR



GROUND FLOOR



ROOM DIMENSIONS

Kitchen	3.14m x 2.46m	10' 3" x 8' 0"
Living/Dining	4.33m x 2.50m	14' 2" x 8' 2"
Master Bedroom	3.14m x 3.70m	10' 3" x 12' 1"
Bedroom 2	3.21m x 2.75m	10' 6" x 9' 0"
Balcony	4.72m x 1.50m	15' 5" x 4' 11"

KEY

- ◄► Measurement Points
- W Wardrobe
- C Cupboard
- U Utility Cupboard

Floorplans shown for Union Walk are for approximate measurements only. Exact layouts and sizes may vary. All measurements may vary within a tolerance of 5% and are to the maximum room dimensions. The dimensions are not intended to be used for carpet sizes, appliance sizes or items of furniture. Furniture layouts are indicative only. Kitchen layout indicative only. Please ask Sales Executive for further information.

**UNION
WALK**

**AT SOUTHALL
WATERSIDE**

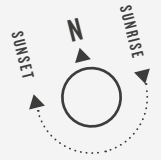
Newell House



**CLARION
HOUSING**

NEWELL HOUSE

2 BEDROOM APARTMENT



APARTMENT

EG-04

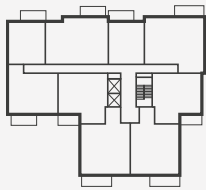
TOTAL AREA

66.4 SQ M 714.7 SQ FT

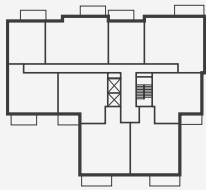
TERRACE AREA

7.9 SQ M 85.1 SQ FT

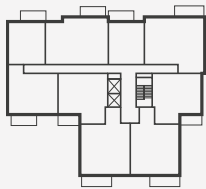
FIFTH FLOOR



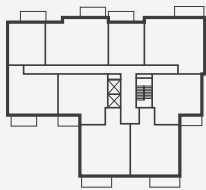
FOURTH FLOOR



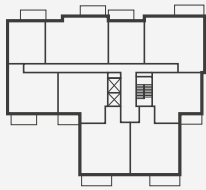
THIRD FLOOR



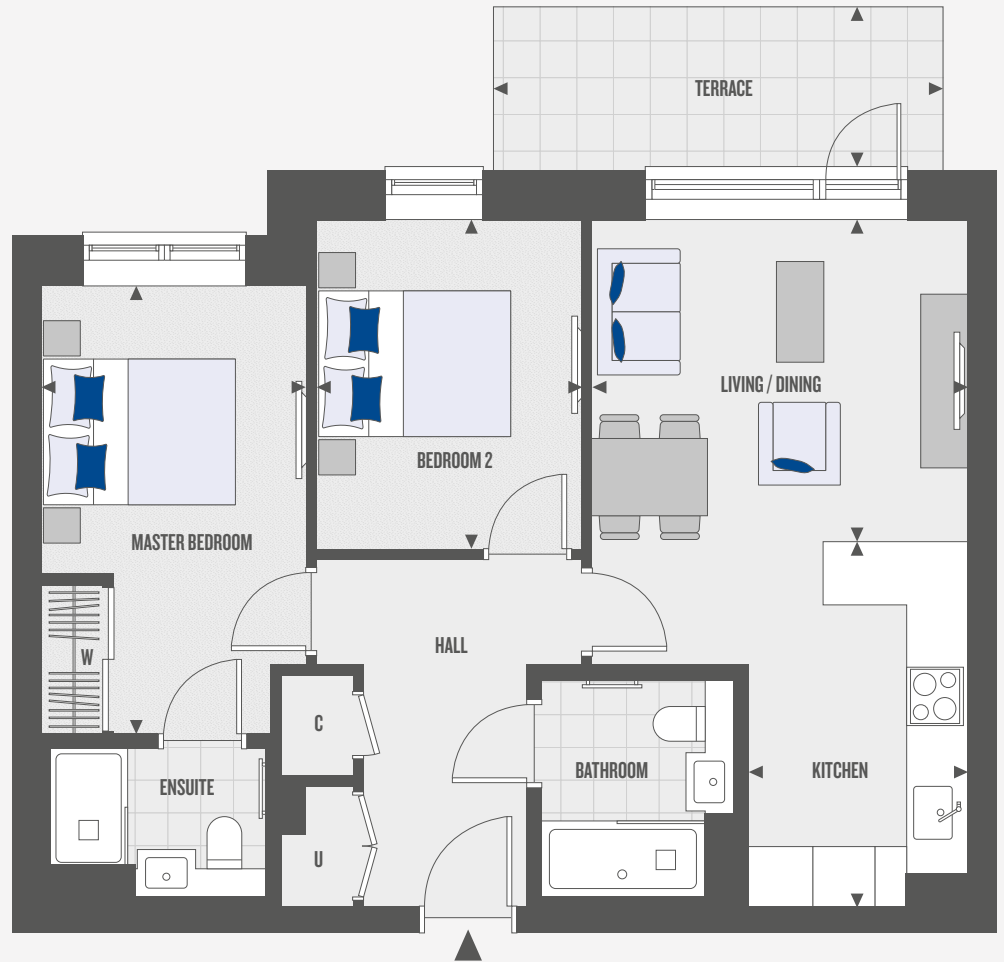
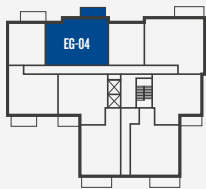
SECOND FLOOR



FIRST FLOOR



GROUND FLOOR



ROOM DIMENSIONS

Kitchen	2.29m x 3.77m	7' 6" x 12' 4"
Living/Dining	3.91m x 3.33m	12' 10" x 10' 11"
Master Bedroom	2.75m x 4.65m	9' 0" x 15' 3"
Bedroom 2	2.75m x 3.41m	9' 0" x 11' 2"
Terrace	4.65m x 1.70m	15' 3" x 5' 7"

KEY

- ◄► Measurement Points
- W Wardrobe
- C Cupboard
- U Utility Cupboard

Floorplans shown for Union Walk are for approximate measurements only. Exact layouts and sizes may vary. All measurements may vary within a tolerance of 5% and are to the maximum room dimensions. The dimensions are not intended to be used for carpet sizes, appliance sizes or items of furniture. Furniture layouts are indicative only. Kitchen layout indicative only. Please ask Sales Executive for further information.

**UNION
WALK**

**AT SOUTHALL
WATERSIDE**

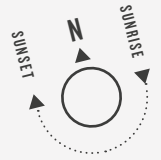
Newell House



**CLARION
HOUSING**

NEWELL HOUSE

2 BEDROOM APARTMENT



APARTMENTS

E1-04, E2-04, E3-04,
E4-04 & E5-04

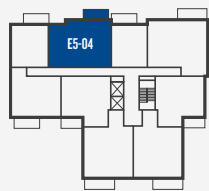
TOTAL AREA

66.4 SQ M 714.7 SQ FT

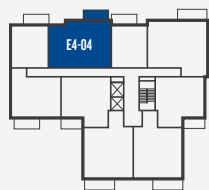
BALCONY AREA

6.0 SQ M 64.2 SQ FT

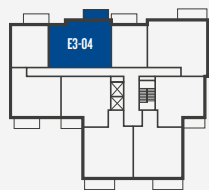
FIFTH FLOOR



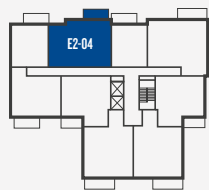
FOURTH FLOOR



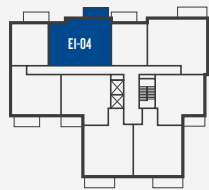
THIRD FLOOR



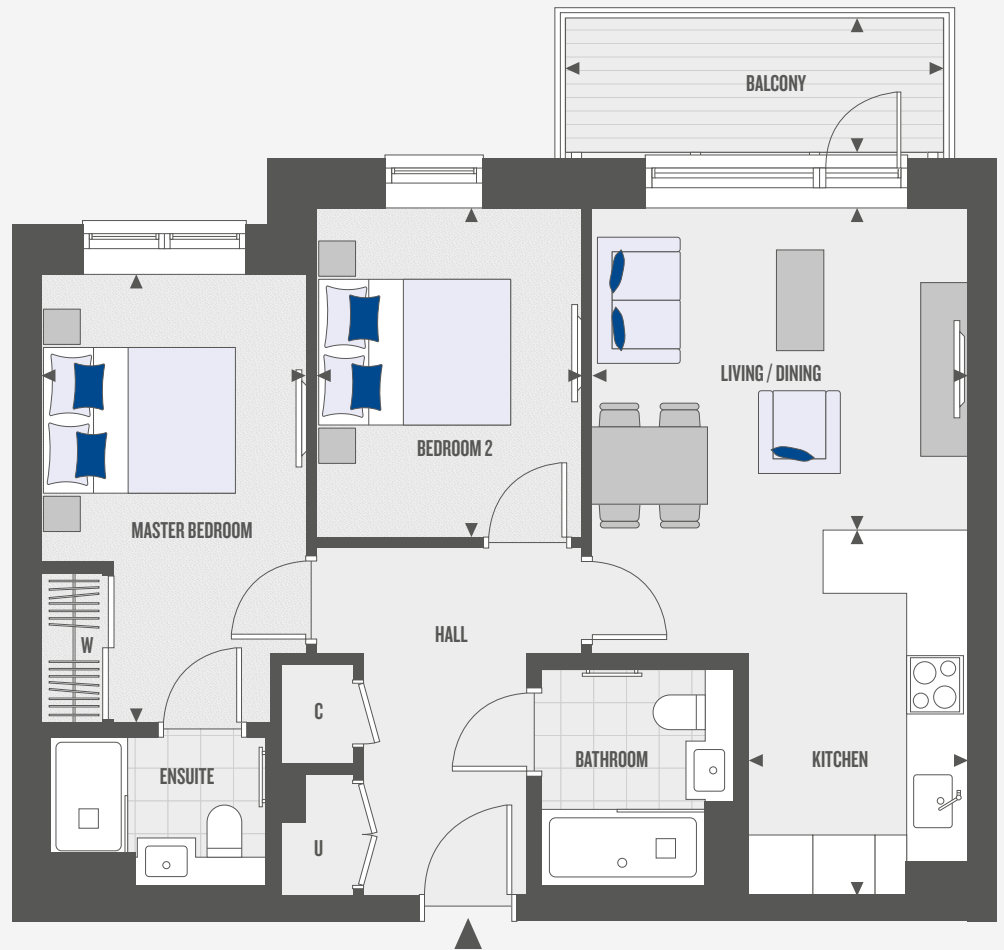
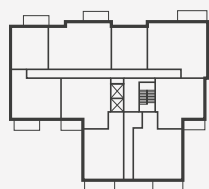
SECOND FLOOR



FIRST FLOOR



GROUND FLOOR



ROOM DIMENSIONS

Kitchen	2.29m x 3.77m	7' 6" x 12' 4"
Living/Dining	3.91m x 3.33m	12' 10" x 10' 11"
Master Bedroom	2.75m x 4.65m	9' 0" x 15' 3"
Bedroom 2	2.75m x 3.41m	9' 0" x 11' 2"
Balcony	4.04m x 1.50m	13' 3" x 4' 11"

KEY

- ◄► Measurement Points
- W Wardrobe
- C Cupboard
- U Utility Cupboard

Floorplans shown for Union Walk are for approximate measurements only. Exact layouts and sizes may vary. All measurements may vary within a tolerance of 5% and are to the maximum room dimensions. The dimensions are not intended to be used for carpet sizes, appliance sizes or items of furniture. Furniture layouts are indicative only. Kitchen layout indicative only. Please ask Sales Executive for further information.

**UNION
WALK**

**AT SOUTHALL
WATERSIDE**

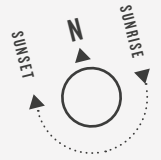
Newell House



**CLARION
HOUSING**

NEWELL HOUSE

**2 BEDROOM
APARTMENT**



APARTMENT

EG-05

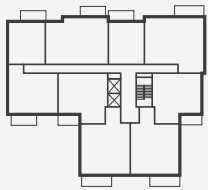
TOTAL AREA

70.3 SQ M 757.2 SQ FT

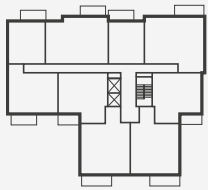
TERRACE AREA

7.7 SQ M 83.2 SQ FT

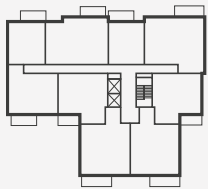
FIFTH FLOOR



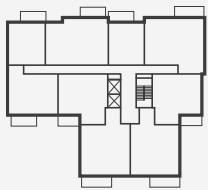
FOURTH FLOOR



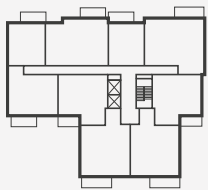
THIRD FLOOR



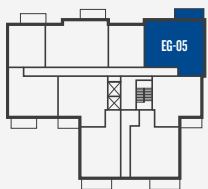
SECOND FLOOR



FIRST FLOOR



GROUND FLOOR



ROOM DIMENSIONS

Kitchen	4.49m x 1.92m	14' 8" x 6' 3"
Living/Dining	4.49m x 3.92m	14' 8" x 12' 10"
Master Bedroom	2.75m x 4.30m	9' 0" x 14' 1"
Bedroom 2	3.84m x 2.75m	12' 7" x 9' 0"
Terrace	4.85m x 1.60m	15' 10" x 5' 3"

KEY

- ◀▶ Measurement Points
- W Wardrobe
- C Cupboard
- U Utility Cupboard

Floorplans shown for Union Walk are for approximate measurements only. Exact layouts and sizes may vary. All measurements may vary within a tolerance of 5% and are to the maximum room dimensions. The dimensions are not intended to be used for carpet sizes, appliance sizes or items of furniture. Furniture layouts are indicative only. Kitchen layout indicative only. Please ask Sales Executive for further information.

**UNION
WALK**

**AT SOUTHALL
WATERSIDE**

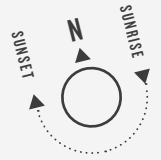
Newell House



**CLARION
HOUSING**

NEWELL HOUSE

2 BEDROOM APARTMENT



APARTMENTS

E1-06, E2-06, E3-06, E4-06 & E5-06

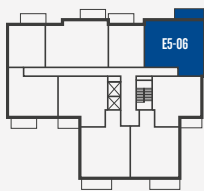
TOTAL AREA

70.3 SQ M 757.2 SQ FT

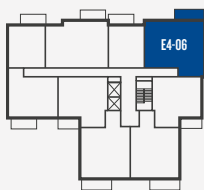
BALCONY AREA

7.0 SQ M 75.3 SQ FT

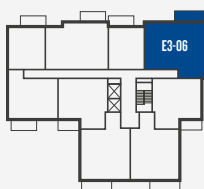
FIFTH FLOOR



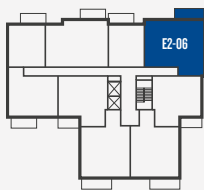
FOURTH FLOOR



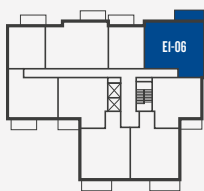
THIRD FLOOR



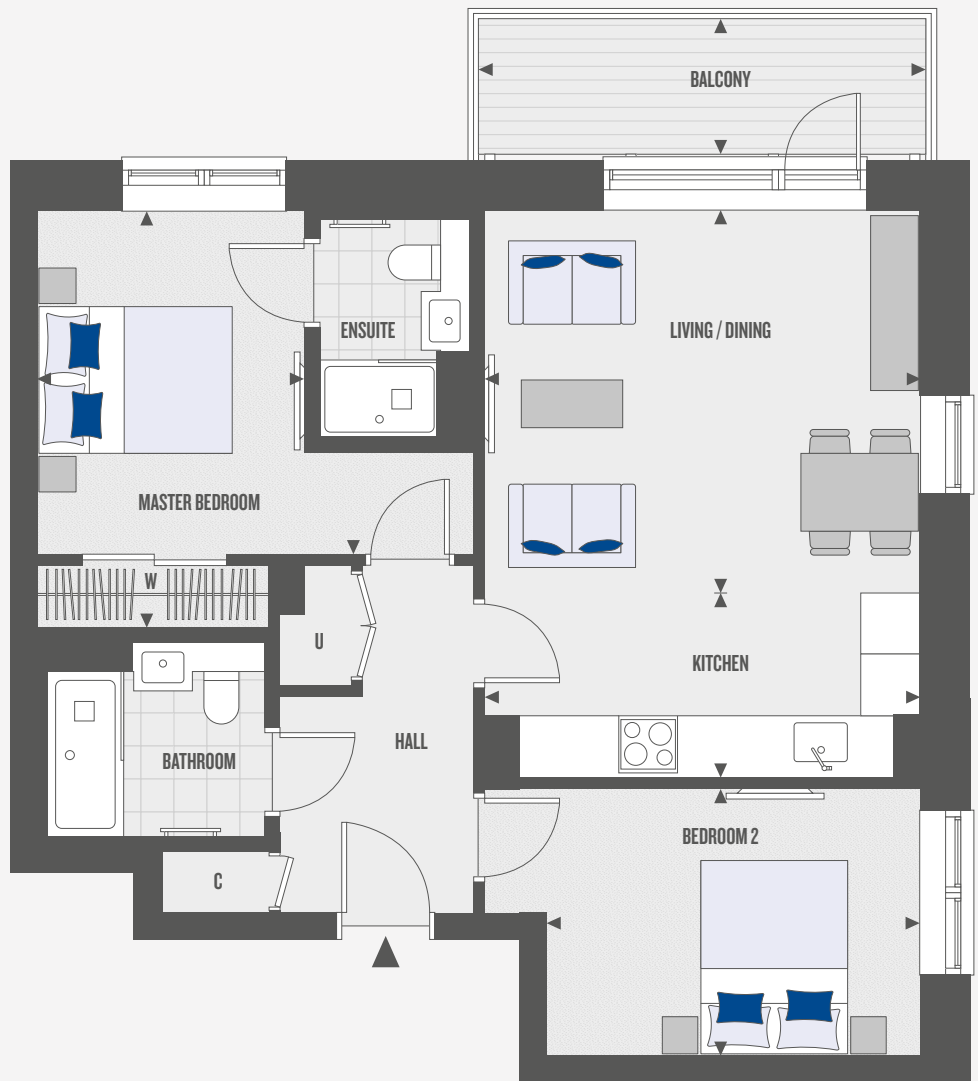
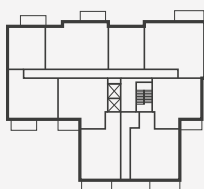
SECOND FLOOR



FIRST FLOOR



GROUND FLOOR



ROOM DIMENSIONS

Kitchen	4.49m x 1.92m	14' 8" x 6' 3"
Living/Dining	4.49m x 3.92m	14' 8" x 12' 10"
Master Bedroom	2.75m x 4.30m	9' 0" x 14' 1"
Bedroom 2	3.84m x 2.75m	12' 7" x 9' 0"
Balcony	4.72m x 1.50m	15' 5" x 4' 11"

KEY

- ◄► Measurement Points
- W Wardrobe
- C Cupboard
- U Utility Cupboard

Floorplans shown for Union Walk are for approximate measurements only. Exact layouts and sizes may vary. All measurements may vary within a tolerance of 5% and are to the maximum room dimensions. The dimensions are not intended to be used for carpet sizes, appliance sizes or items of furniture. Furniture layouts are indicative only. Kitchen layout indicative only. Please ask Sales Executive for further information.