



AT SOUTHALL
WATERSIDE

Bravey House



CLARION
HOUSING

BRAVEY HOUSE

I BEDROOM SUITE

SUITE

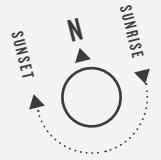
FG-08

TOTAL AREA

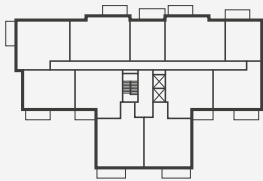
37.3 SQ M 402.0 SQ FT

TERRACE AREA

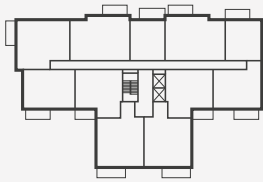
7.1 SQ M 76.4 SQ FT



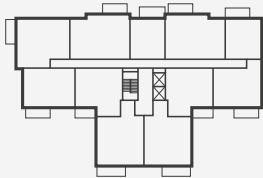
FIFTH FLOOR



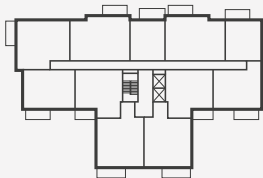
FOURTH FLOOR



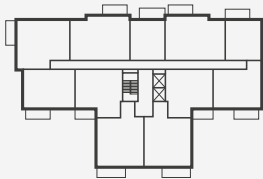
THIRD FLOOR



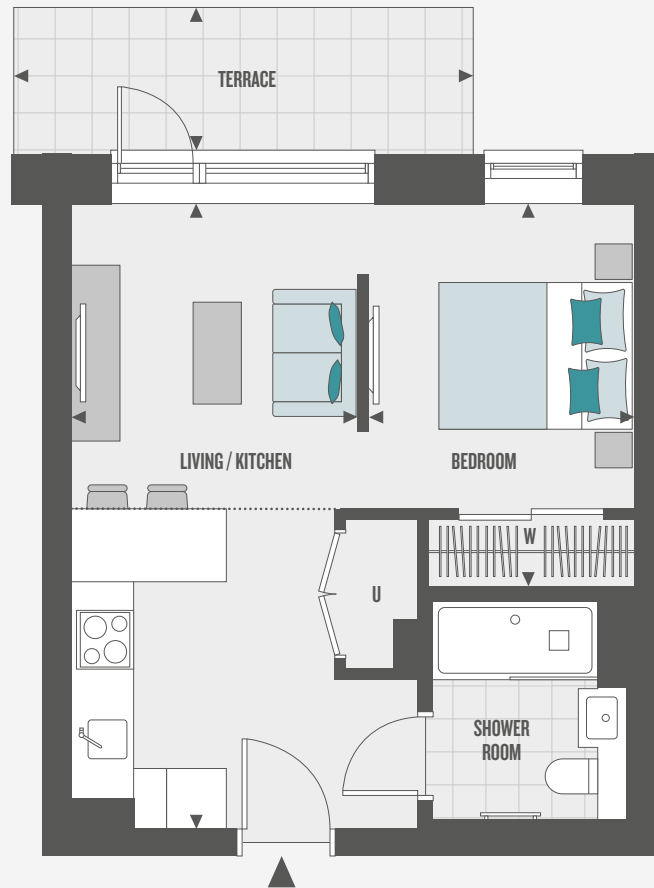
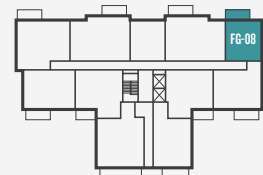
SECOND FLOOR



FIRST FLOOR



GROUND FLOOR



ROOM DIMENSIONS

| | | |
|----------------|---------------|-----------------|
| Living/Kitchen | 2.96m x 6.43m | 9' 8" x 21' 1" |
| Bedroom | 2.75m x 3.95m | 9' 0" x 12' 11" |
| Terrace | 4.73m x 1.50m | 15' 6" x 4' 11" |

KEY

- ◄► Measurement Points
- W Wardrobe
- C Cupboard
- U Utility Cupboard
- Bulkhead

Floorplans shown for Union Walk are for approximate measurements only. Exact layouts and sizes may vary. All measurements may vary within a tolerance of 5% and are to the maximum room dimensions. The dimensions are not intended to be used for carpet sizes, appliance sizes or items of furniture. Furniture layouts are indicative only. Kitchen layout indicative only. Please ask Sales Executive for further information.



AT SOUTHALL
WATERSIDE

Bravey House



CLARION
HOUSING

BRAVEY HOUSE

1 BEDROOM SUITE

SUITES

F1-07*, F1-09, F2-07*, F2-09, F3-07*, F3-09, F4-07*, F4-09, F5-07* & F5-09

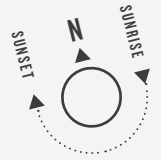
TOTAL AREA

37.3 SQ M 402.0 SQ FT

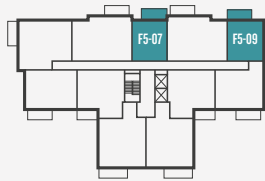
BALCONY AREA

6.0 SQ M 65.2 SQ FT

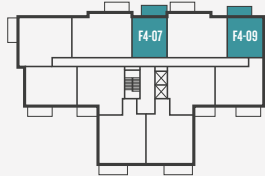
*PLOTS ARE HANDED



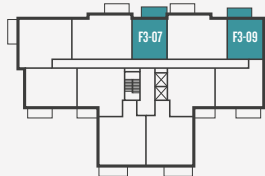
FIFTH FLOOR



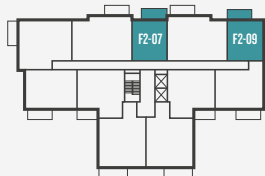
FOURTH FLOOR



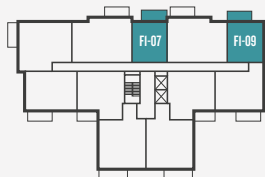
THIRD FLOOR



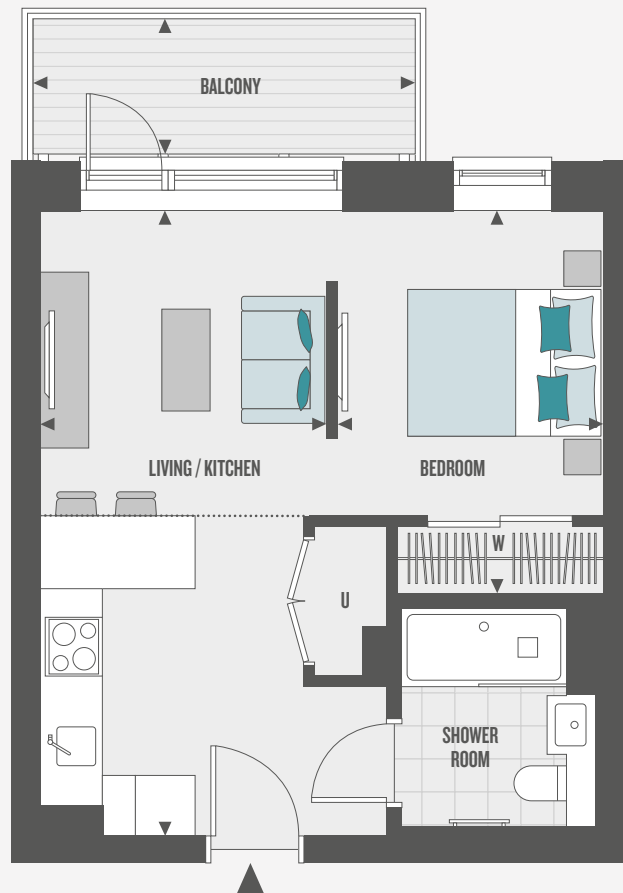
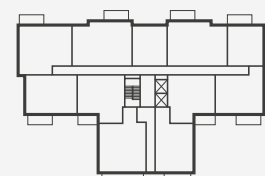
SECOND FLOOR



FIRST FLOOR



GROUND FLOOR



ROOM DIMENSIONS

| | | |
|----------------|---------------|-----------------|
| Living/Kitchen | 2.96m x 6.43m | 9' 8" x 21' 1" |
| Bedroom | 2.75m x 3.95m | 9' 0" x 12' 11" |
| Balcony | 4.04m x 1.50m | 13' 3" x 4' 11" |

KEY

- ◄► Measurement Points
- W Wardrobe
- C Cupboard
- U Utility Cupboard
- Bulkhead

Floorplans shown for Union Walk are for approximate measurements only. Exact layouts and sizes may vary. All measurements may vary within a tolerance of 5% and are to the maximum room dimensions. The dimensions are not intended to be used for carpet sizes, appliance sizes or items of furniture. Furniture layouts are indicative only. Kitchen layout indicative only. Please ask Sales Executive for further information.



AT SOUTHALL
WATERSIDE

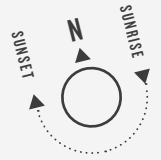
Bravey House



CLARION
HOUSING

BRAVEY HOUSE

1 BEDROOM APARTMENT



APARTMENT

FG-09

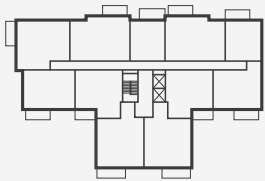
TOTAL AREA

50.2 SQ M 540.6 SQ FT

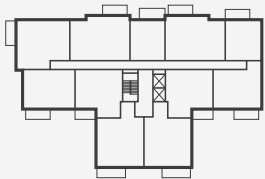
TERRACE AREA

6.2 SQ M 67.7 SQ FT

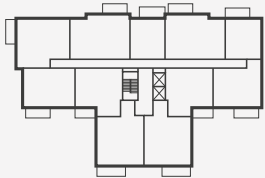
FIFTH FLOOR



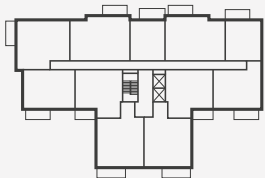
FOURTH FLOOR



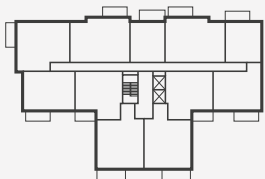
THIRD FLOOR



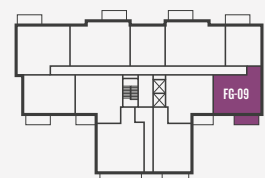
SECOND FLOOR



FIRST FLOOR



GROUND FLOOR



ROOM DIMENSIONS

| | | |
|---------------|---------------|-----------------|
| Kitchen | 2.29m x 2.82m | 7' 6" x 9' 3" |
| Living/Dining | 4.03m x 4.75m | 13' 2" x 15' 7" |
| Bedroom | 3.70m x 3.00m | 12' 1" x 9' 10" |
| Terrace | 4.20m x 1.50m | 13' 9" x 4' 11" |

KEY

- ◄► Measurement Points
- W Wardrobe
- C Cupboard
- U Utility Cupboard

Floorplans shown for Union Walk are for approximate measurements only. Exact layouts and sizes may vary. All measurements may vary within a tolerance of 5% and are to the maximum room dimensions. The dimensions are not intended to be used for carpet sizes, appliance sizes or items of furniture. Furniture layouts are indicative only. Kitchen layout indicative only. Please ask Sales Executive for further information.



AT SOUTHALL
WATERSIDE

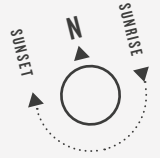
Bravey House



CLARION
HOUSING

BRAVEY HOUSE

I BEDROOM
APARTMENT



APARTMENTS

F1-10, F2-10, F3-10,
F4-10 & F5-10

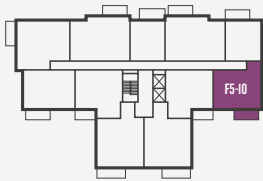
TOTAL AREA

50.2 SQ M 540.6 SQ FT

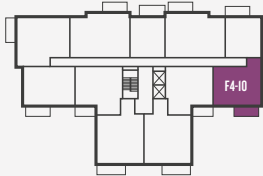
BALCONY AREA

6.0 SQ M 65.2 SQ FT

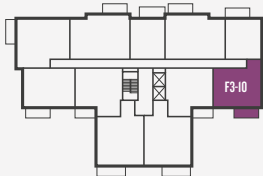
FIFTH FLOOR



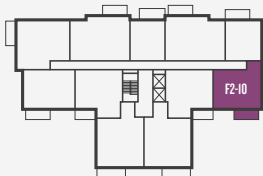
FOURTH FLOOR



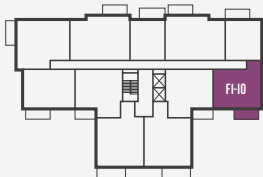
THIRD FLOOR



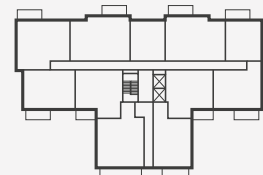
SECOND FLOOR



FIRST FLOOR



GROUND FLOOR



ROOM DIMENSIONS

| | | |
|---------------|---------------|-----------------|
| Kitchen | 2.29m x 2.82m | 7' 6" x 9' 3" |
| Living/Dining | 4.03m x 4.75m | 13' 2" x 15' 7" |
| Bedroom | 3.70m x 3.00m | 12' 1" x 9' 10" |
| Balcony | 4.04m x 1.50m | 13' 3" x 4' 11" |

KEY

- ◄► Measurement Points
- W Wardrobe
- C Cupboard
- U Utility Cupboard

Floorplans shown for Union Walk are for approximate measurements only. Exact layouts and sizes may vary. All measurements may vary within a tolerance of 5% and are to the maximum room dimensions. The dimensions are not intended to be used for carpet sizes, appliance sizes or items of furniture. Furniture layouts are indicative only. Kitchen layout indicative only. Please ask Sales Executive for further information.



AT SOUTHALL
WATERSIDE

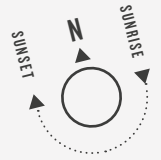
Bravey House



CLARION
HOUSING

BRAVEY HOUSE

I BEDROOM
APARTMENT



APARTMENT

FG-04

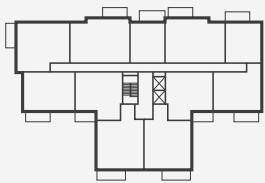
TOTAL AREA

50.6 SQ M 544.7 SQ FT

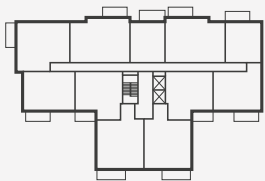
TERRACE AREA

8.0 SQ M 165.2 SQ FT

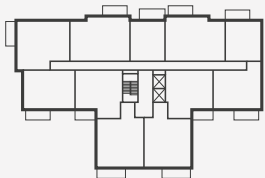
FIFTH FLOOR



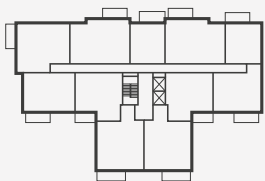
FOURTH FLOOR



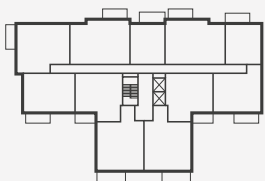
THIRD FLOOR



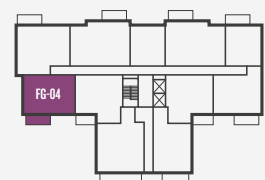
SECOND FLOOR



FIRST FLOOR



GROUND FLOOR



ROOM DIMENSIONS

| | | |
|---------------|---------------|-----------------|
| Kitchen | 3.33m x 2.26m | 10' 11" x 7' 5" |
| Living/Dining | 4.18m x 3.88m | 13' 9" x 12' 8" |
| Bedroom | 3.99m x 3.86m | 13' 1" x 12' 8" |
| Terrace | 4.68m x 1.71m | 15' 4" x 5' 7" |

KEY

- ◄► Measurement Points
- W Wardrobe
- C Cupboard
- U Utility Cupboard

Floorplans shown for Union Walk are for approximate measurements only. Exact layouts and sizes may vary. All measurements may vary within a tolerance of 5% and are to the maximum room dimensions. The dimensions are not intended to be used for carpet sizes, appliance sizes or items of furniture. Furniture layouts are indicative only. Kitchen layout indicative only. Please ask Sales Executive for further information.



AT SOUTHALL
WATERSIDE

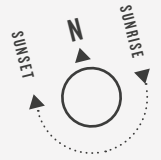
Bravey House



CLARION
HOUSING

BRAVEY HOUSE

1 BEDROOM APARTMENT



APARTMENTS

F1-04, F2-04, F3-04,
F4-04, & F5-04

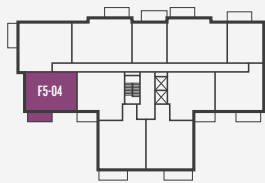
TOTAL AREA

50.6 SQ M 544.7 SQ FT

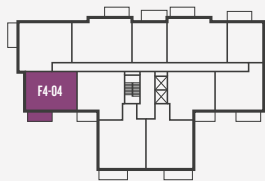
BALCONY AREA

6.0 SQ M 65.2 SQ FT

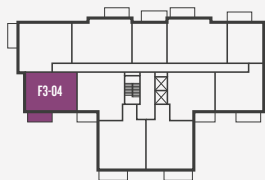
FIFTH FLOOR



FOURTH FLOOR



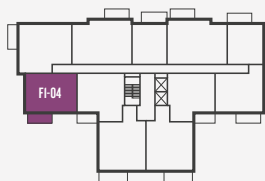
THIRD FLOOR



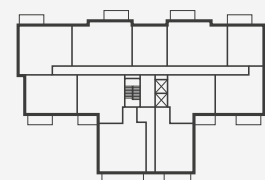
SECOND FLOOR



FIRST FLOOR



GROUND FLOOR



ROOM DIMENSIONS

| | | |
|---------------|---------------|-----------------|
| Kitchen | 3.33m x 2.26m | 10' 11" x 7' 5" |
| Living/Dining | 4.18m x 3.88m | 13' 9" x 12' 8" |
| Bedroom | 3.99m x 3.86m | 13' 1" x 12' 8" |
| Balcony | 4.04m x 1.50m | 13' 3" x 4' 11" |

KEY

- ◄► Measurement Points
- W Wardrobe
- C Cupboard
- U Utility Cupboard

Floorplans shown for Union Walk are for approximate measurements only. Exact layouts and sizes may vary. All measurements may vary within a tolerance of 5% and are to the maximum room dimensions. The dimensions are not intended to be used for carpet sizes, appliance sizes or items of furniture. Furniture layouts are indicative only. Kitchen layout indicative only. Please ask Sales Executive for further information.



AT SOUTHALL
WATERSIDE

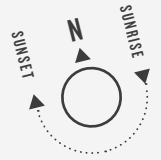
Bravey House



CLARION
HOUSING

BRAVEY HOUSE

I BEDROOM
APARTMENT



APARTMENT

FG-03

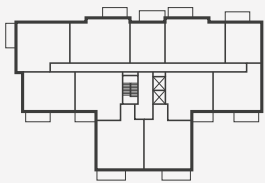
TOTAL AREA

51.6 SQ M 556.0 SQ FT

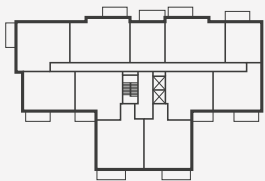
TERRACE AREA

5.1 SQ M 53.8 SQ FT

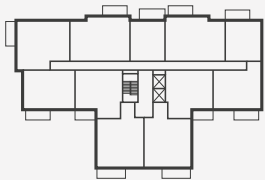
FIFTH FLOOR



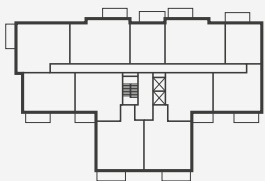
FOURTH FLOOR



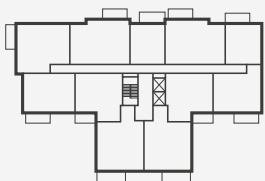
THIRD FLOOR



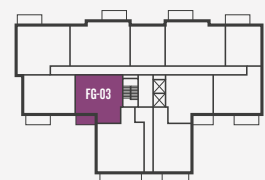
SECOND FLOOR



FIRST FLOOR



GROUND FLOOR



ROOM DIMENSIONS

| | | |
|---------------|---------------|-----------------|
| Kitchen | 3.34m x 2.29m | 10' 11" x 7' 6" |
| Living/Dining | 4.19m x 3.80m | 13' 9" x 12' 6" |
| Bedroom | 2.94m x 4.00m | 9' 8" x 13' 1" |
| Terrace | 3.45m x 1.50m | 11' 4" x 4' 11" |

KEY

- ◀▶ Measurement Points
- W Wardrobe
- C Cupboard
- U Utility Cupboard

Floorplans shown for Union Walk are for approximate measurements only. Exact layouts and sizes may vary. All measurements may vary within a tolerance of 5% and are to the maximum room dimensions. The dimensions are not intended to be used for carpet sizes, appliance sizes or items of furniture. Furniture layouts are indicative only. Kitchen layout indicative only. Please ask Sales Executive for further information.



AT SOUTHALL
WATERSIDE

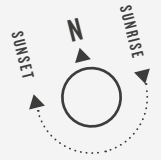
Bravey House



CLARION
HOUSING

BRAVEY HOUSE

1 BEDROOM APARTMENT



APARTMENTS

F1-03, F2-03, F3-03,
F4-03 & F5-03

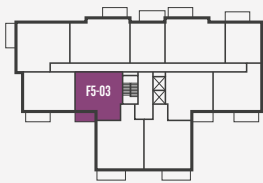
TOTAL AREA

51.6 SQ M 556.0 SQ FT

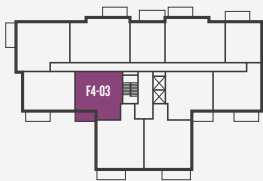
BALCONY AREA

5.0 SQ M 53.8 SQ FT

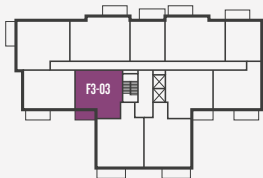
FIFTH FLOOR



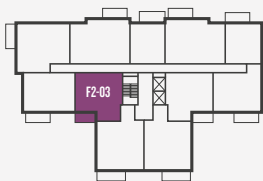
FOURTH FLOOR



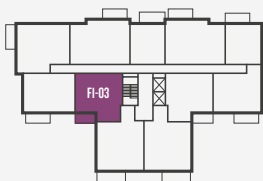
THIRD FLOOR



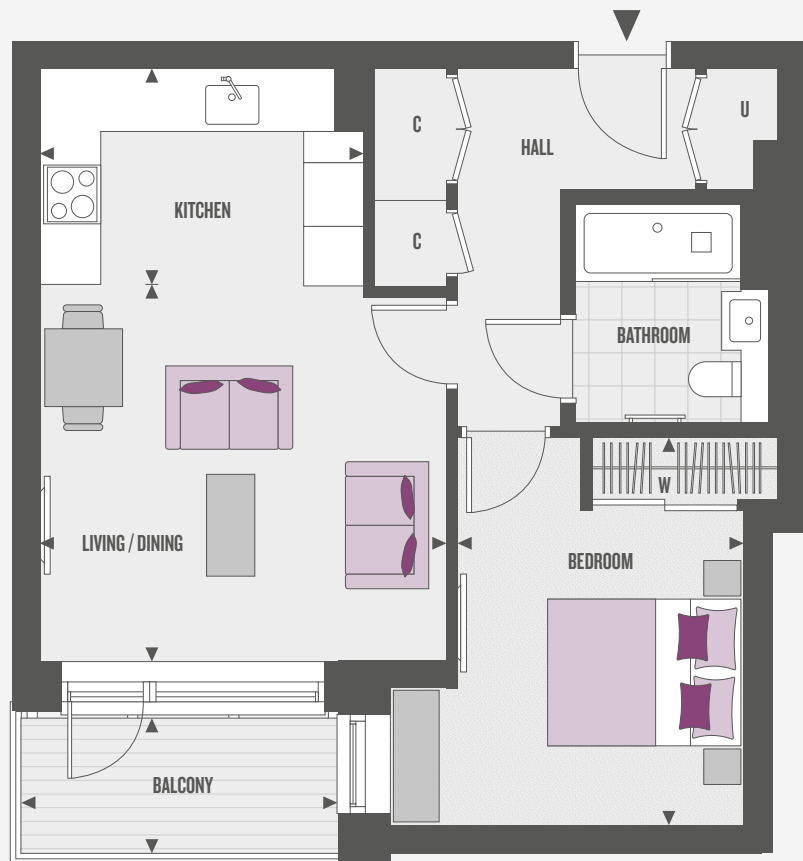
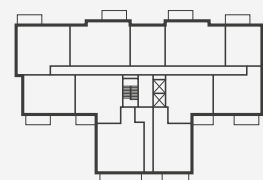
SECOND FLOOR



FIRST FLOOR



GROUND FLOOR



ROOM DIMENSIONS

| | | |
|---------------|---------------|------------------|
| Kitchen | 3.34m x 2.29m | 10' 11" x 7' 6" |
| Living/Dining | 4.19m x 3.80m | 13' 9" x 12' 6" |
| Bedroom | 2.94m x 4.00m | 9' 8" x 13' 1" |
| Balcony | 3.33m x 1.50m | 10' 11" x 4' 11" |

KEY

- ◄► Measurement Points
- W Wardrobe
- C Cupboard
- U Utility Cupboard

Floorplans shown for Union Walk are for approximate measurements only. Exact layouts and sizes may vary. All measurements may vary within a tolerance of 5% and are to the maximum room dimensions. The dimensions are not intended to be used for carpet sizes, appliance sizes or items of furniture. Furniture layouts are indicative only. Kitchen layout indicative only. Please ask Sales Executive for further information.



AT SOUTHALL
WATERSIDE

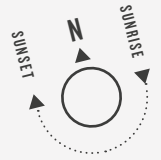
Bravey House



CLARION
HOUSING

BRAVEY HOUSE

I BEDROOM
APARTMENT



APARTMENT

FG-10

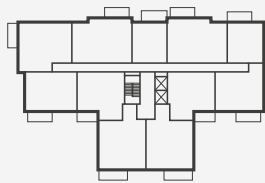
TOTAL AREA

51.9 SQ M 559.5 SQ FT

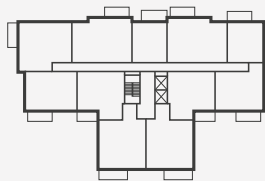
TERRACE AREA

5.0 SQ M 54.1 SQ FT

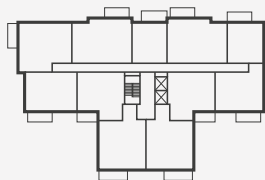
FIFTH FLOOR



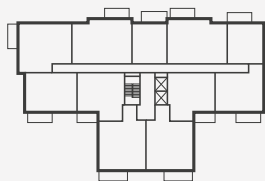
FOURTH FLOOR



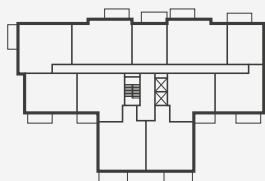
THIRD FLOOR



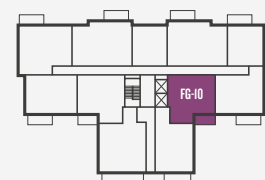
SECOND FLOOR



FIRST FLOOR



GROUND FLOOR



ROOM DIMENSIONS

| | | |
|---------------|---------------|------------------|
| Kitchen | 3.36m x 2.29m | 11' 0" x 7' 6" |
| Living/Dining | 4.21m x 3.80m | 13' 10" x 12' 6" |
| Bedroom | 2.96m x 4.00m | 9' 8" x 13' 1" |
| Terrace | 3.35m x 1.50m | 11' 0" x 4' 11" |

KEY

- ◀▶ Measurement Points
- W Wardrobe
- C Cupboard
- U Utility Cupboard

Floorplans shown for Union Walk are for approximate measurements only. Exact layouts and sizes may vary. All measurements may vary within a tolerance of 5% and are to the maximum room dimensions. The dimensions are not intended to be used for carpet sizes, appliance sizes or items of furniture. Furniture layouts are indicative only. Kitchen layout indicative only. Please ask Sales Executive for further information.



AT SOUTHALL
WATERSIDE

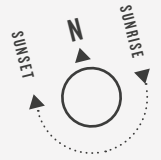
Bravey House



CLARION
HOUSING

BRAVEY HOUSE

I BEDROOM APARTMENT



APARTMENTS

F1-II, F2-II, F3-II,
F4-II & F5-II

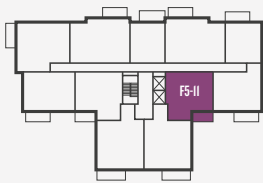
TOTAL AREA

51.9 SQ M 559.5 SQ FT

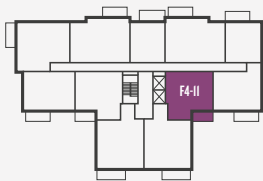
BALCONY AREA

5.0 SQ M 53.8 SQ FT

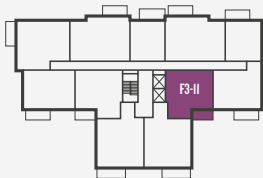
FIFTH FLOOR



FOURTH FLOOR



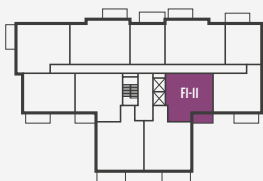
THIRD FLOOR



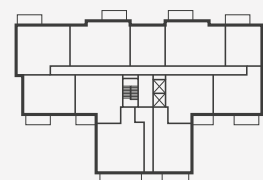
SECOND FLOOR



FIRST FLOOR



GROUND FLOOR



ROOM DIMENSIONS

| | | |
|---------------|---------------|------------------|
| Kitchen | 3.36m x 2.29m | 11' 0" x 7' 6" |
| Living/Dining | 4.21m x 3.80m | 13' 10" x 12' 6" |
| Bedroom | 2.96m x 4.00m | 9' 8" x 13' 1" |
| Balcony | 3.33m x 1.50m | 10' 11" x 4' 11" |

KEY

- ◀▶ Measurement Points
- W Wardrobe
- C Cupboard
- U Utility Cupboard

Floorplans shown for Union Walk are for approximate measurements only. Exact layouts and sizes may vary. All measurements may vary within a tolerance of 5% and are to the maximum room dimensions. The dimensions are not intended to be used for carpet sizes, appliance sizes or items of furniture. Furniture layouts are indicative only. Kitchen layout indicative only. Please ask Sales Executive for further information.



AT SOUTHALL
WATERSIDE

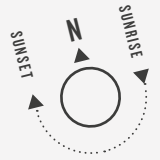
Bravey House



CLARION
HOUSING

BRAVEY HOUSE

1 BEDROOM APARTMENT



APARTMENT

FG-01

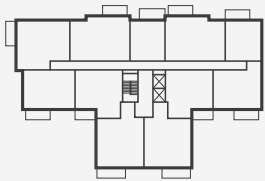
TOTAL AREA

53.1 SQ M 571.6 SQ FT

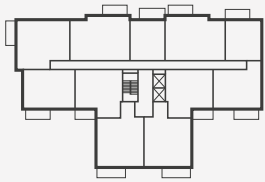
BALCONY AREA

8.9 SQ M 96.5 SQ FT

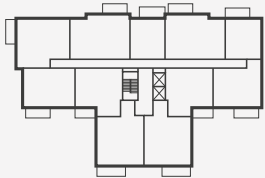
FIFTH FLOOR



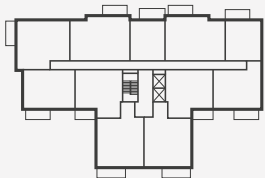
FOURTH FLOOR



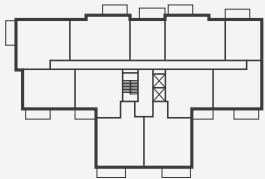
THIRD FLOOR



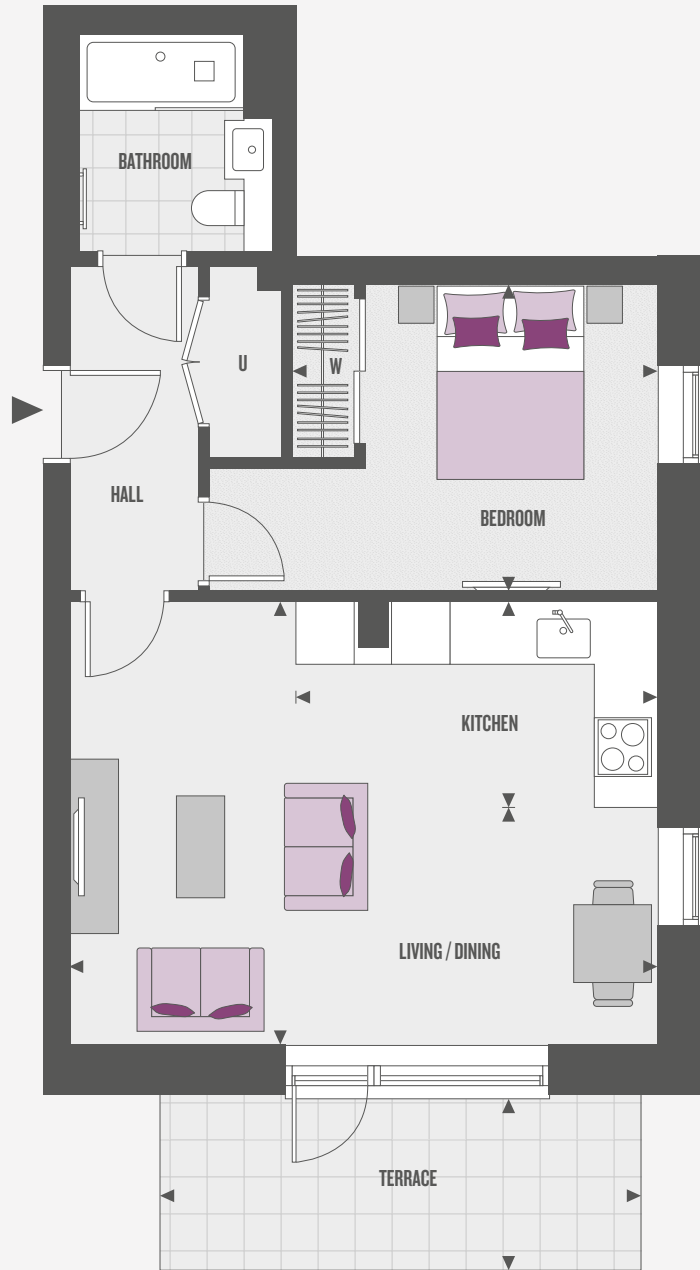
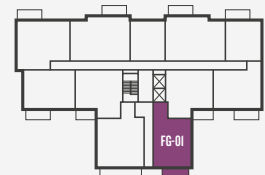
SECOND FLOOR



FIRST FLOOR



GROUND FLOOR



ROOM DIMENSIONS

| | | |
|---------------|---------------|-------------------|
| Kitchen | 3.73m x 2.12m | 12' 2" x 10' 4" |
| Living/Dining | 6.04m x 4.56m | 19' 10" x 14' 11" |
| Bedroom | 3.74m x 3.16m | 12' 3" x 10' 4" |
| Terrace | 4.94m x 1.82m | 16' 2" x 5' 11" |

KEY

- ◄► Measurement Points
- W Wardrobe
- C Cupboard
- U Utility Cupboard

Floorplans shown for Union Walk are for approximate measurements only. Exact layouts and sizes may vary. All measurements may vary within a tolerance of 5% and are to the maximum room dimensions. The dimensions are not intended to be used for carpet sizes, appliance sizes or items of furniture. Furniture layouts are indicative only. Kitchen layout indicative only. Please ask Sales Executive for further information.



AT SOUTHALL
WATERSIDE

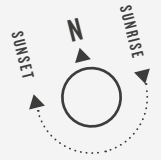
Bravey House



CLARION
HOUSING

BRAVEY HOUSE

2 BEDROOM APARTMENT



APARTMENT

FG-05

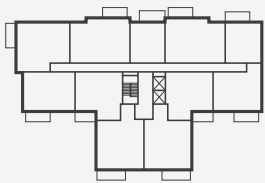
TOTAL AREA

61.5 SQ M 662.4 SQ FT

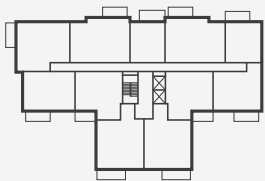
TERRACE AREA

9.6 SQ M 65.2 SQ FT

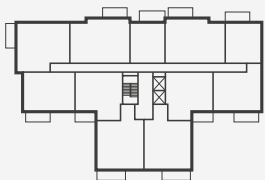
FIFTH FLOOR



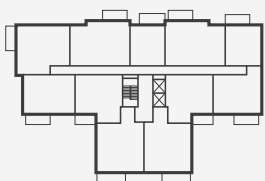
FOURTH FLOOR



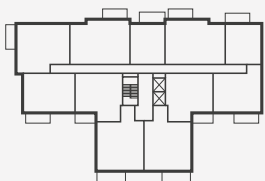
THIRD FLOOR



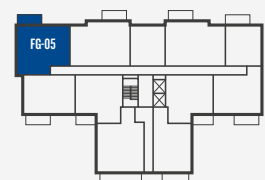
SECOND FLOOR



FIRST FLOOR



GROUND FLOOR



ROOM DIMENSIONS

| | | |
|----------------|---------------|-----------------|
| Kitchen | 1.85m x 4.47m | 6' 1" x 14' 8" |
| Living/Dining | 2.79m x 4.48m | 9' 2" x 14' 8" |
| Master Bedroom | 3.79m x 3.11m | 12' 5" x 10' 2" |
| Bedroom 2 | 2.79m x 3.29m | 9' 2" x 10' 10" |
| Terrace | 4.35m x 2.20m | 14' 3" x 7' 2" |

KEY

- ◄► Measurement Points
- W Wardrobe
- C Cupboard
- U Utility Cupboard

Floorplans shown for Union Walk are for approximate measurements only. Exact layouts and sizes may vary. All measurements may vary within a tolerance of 5% and are to the maximum room dimensions. The dimensions are not intended to be used for carpet sizes, appliance sizes or items of furniture. Furniture layouts are indicative only. Kitchen layout indicative only. Please ask Sales Executive for further information.



AT SOUTHALL
WATERSIDE

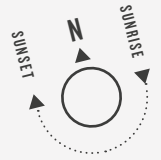
Bravey House



CLARION
HOUSING

BRAVEY HOUSE

2 BEDROOM APARTMENT



APARTMENTS

F1-05, F2-05, F3-05,
F4-05 & F5-05

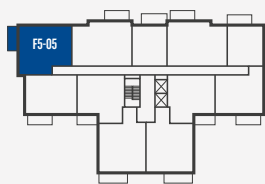
TOTAL AREA

61.5 SQ M 662.4 SQ FT

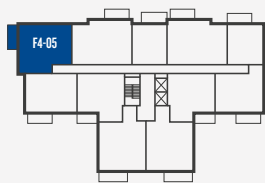
BALCONY AREA

6.0 SQ M 65.2 SQ FT

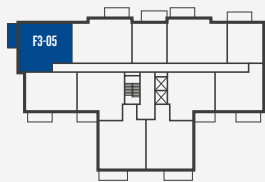
FIFTH FLOOR



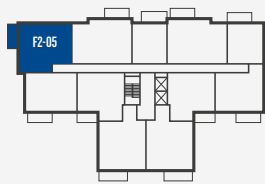
FOURTH FLOOR



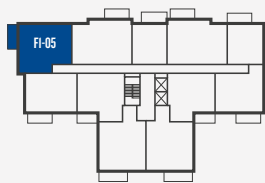
THIRD FLOOR



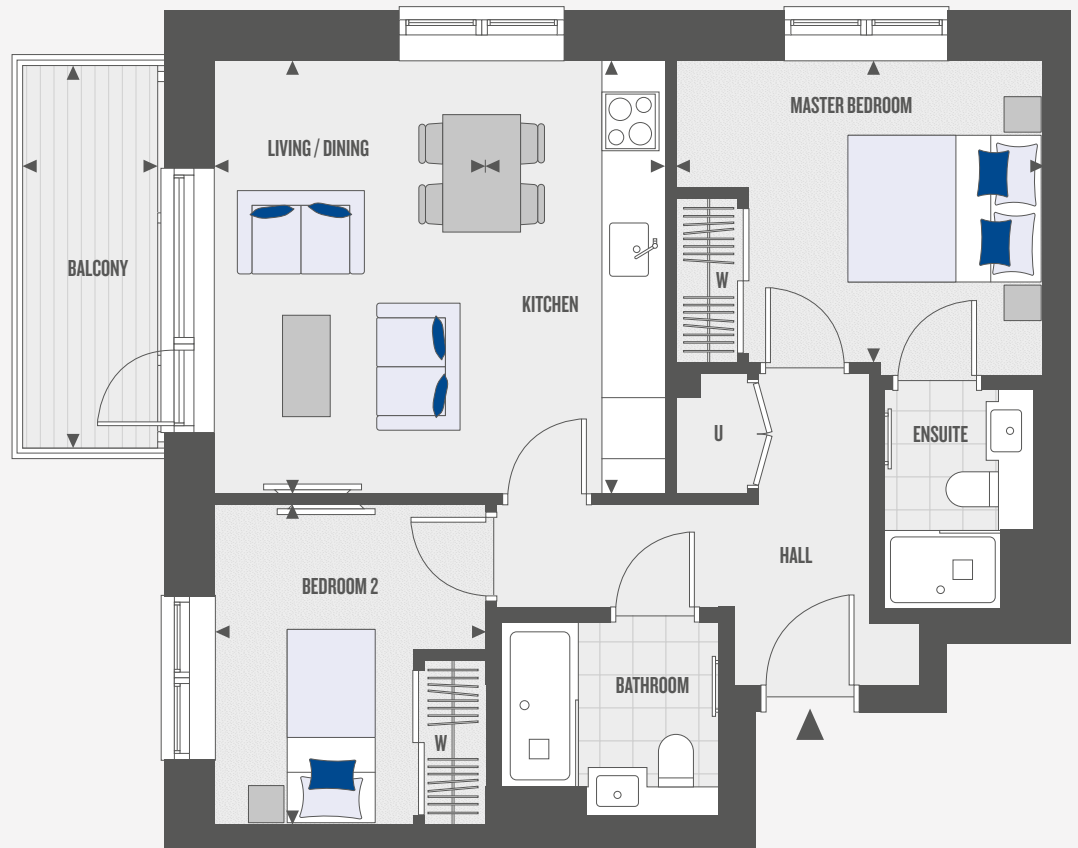
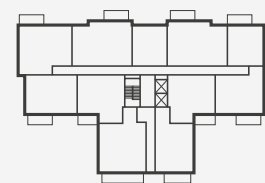
SECOND FLOOR



FIRST FLOOR



GROUND FLOOR



ROOM DIMENSIONS

| | | |
|----------------|---------------|-----------------|
| Kitchen | 1.85m x 4.47m | 6' 1" x 14' 8" |
| Living/Dining | 2.79m x 4.48m | 9' 2" x 14' 8" |
| Master Bedroom | 3.79m x 3.11m | 12' 5" x 10' 2" |
| Bedroom 2 | 2.79m x 3.29m | 9' 2" x 10' 10" |
| Balcony | 4.04m x 1.50m | 13' 3" x 4' 11" |

KEY

- ◄ ► Measurement Points
- W Wardrobe
- C Cupboard
- U Utility Cupboard

Floorplans shown for Union Walk are for approximate measurements only. Exact layouts and sizes may vary. All measurements may vary within a tolerance of 5% and are to the maximum room dimensions. The dimensions are not intended to be used for carpet sizes, appliance sizes or items of furniture. Furniture layouts are indicative only. Kitchen layout indicative only. Please ask Sales Executive for further information.



AT SOUTHALL
WATERSIDE

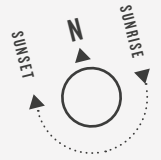
Bravey House



CLARION
HOUSING

BRAVEY HOUSE

2 BEDROOM APARTMENT



APARTMENT

FG-02

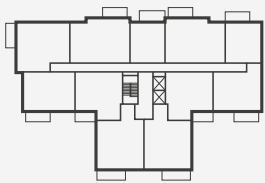
TOTAL AREA

65.2 SQ M 702.3 SQ FT

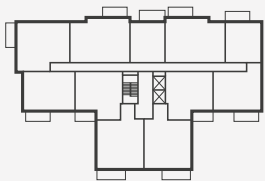
TERRACE AREA

11.1 SQ M 119.3 SQ FT

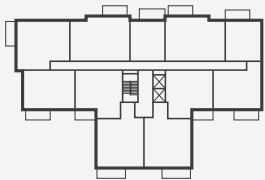
FIFTH FLOOR



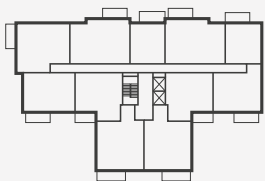
FOURTH FLOOR



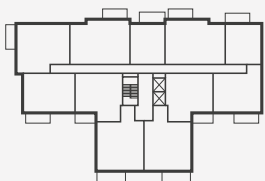
THIRD FLOOR



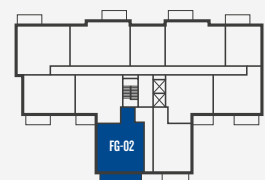
SECOND FLOOR



FIRST FLOOR



GROUND FLOOR



ROOM DIMENSIONS

| | | |
|----------------|---------------|-----------------|
| Kitchen | 3.14m x 2.46m | 10' 3" x 8' 0" |
| Living/Dining | 4.33m x 2.50m | 14' 2" x 8' 2" |
| Master Bedroom | 3.14m x 3.70m | 10' 3" x 12' 1" |
| Bedroom 2 | 3.21m x 2.75m | 10' 6" x 9' 0" |
| Terrace | 6.17m x 1.81m | 20' 2" x 5' 11" |

KEY

- ◄► Measurement Points
- W Wardrobe
- C Cupboard
- U Utility Cupboard

Floorplans shown for Union Walk are for approximate measurements only. Exact layouts and sizes may vary. All measurements may vary within a tolerance of 5% and are to the maximum room dimensions. The dimensions are not intended to be used for carpet sizes, appliance sizes or items of furniture. Furniture layouts are indicative only. Kitchen layout indicative only. Please ask Sales Executive for further information.



AT SOUTHALL
WATERSIDE

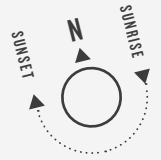
Bravey House



CLARION
HOUSING

BRAVEY HOUSE

2 BEDROOM APARTMENT



APARTMENTS

F1-01*, F1-02, F2-01*, F2-02,
F3-01*, F3-02, F4-01*, F4-02,
F5-01* & F5-02

TOTAL AREA

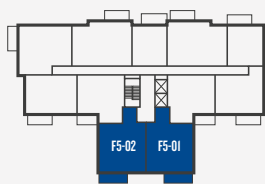
65.2 SQ M 702.3 SQ FT

BALCONY AREA

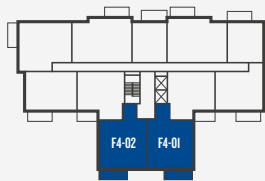
7.0 SQ M 75.3 SQ FT

*PLOTS ARE HANDED

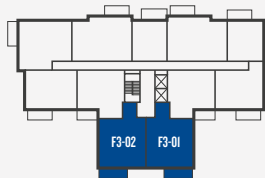
FIFTH FLOOR



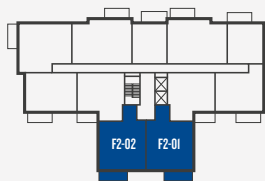
FOURTH FLOOR



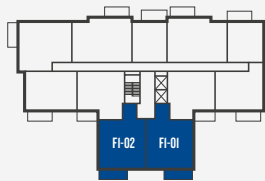
THIRD FLOOR



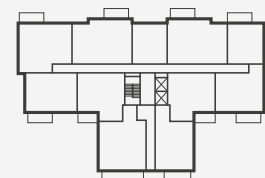
SECOND FLOOR



FIRST FLOOR



GROUND FLOOR



ROOM DIMENSIONS

| | | |
|----------------|---------------|-----------------|
| Kitchen | 3.14m x 2.46m | 10' 3" x 8' 0" |
| Living/Dining | 4.33m x 2.50m | 14' 2" x 8' 2" |
| Master Bedroom | 3.14m x 3.70m | 10' 3" x 12' 1" |
| Bedroom 2 | 3.21m x 2.75m | 10' 6" x 9' 0" |
| Balcony | 4.72m x 1.50m | 15' 5" x 4' 11" |

KEY

- ◀▶ Measurement Points
- W Wardrobe
- C Cupboard
- U Utility Cupboard

Floorplans shown for Union Walk are for approximate measurements only. Exact layouts and sizes may vary. All measurements may vary within a tolerance of 5% and are to the maximum room dimensions. The dimensions are not intended to be used for carpet sizes, appliance sizes or items of furniture. Furniture layouts are indicative only. Kitchen layout indicative only. Please ask Sales Executive for further information.



AT SOUTHALL
WATERSIDE

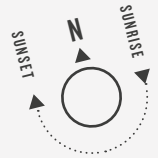
Bravey House



CLARION
HOUSING

BRAVEY HOUSE

2 BEDROOM APARTMENT



APARTMENTS

FG-06 & FG-07*

TOTAL AREA

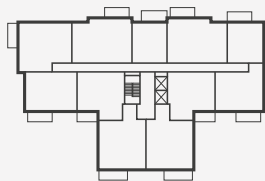
66.4 SQ M 714.7 SQ FT

TERRACE AREA

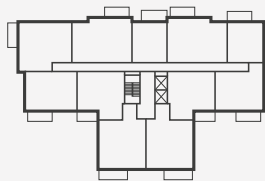
7.9 SQ M 85.0 SQ FT

*PLOT IS HANDED

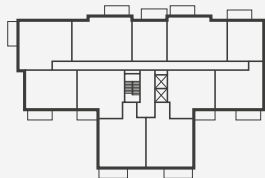
FIFTH FLOOR



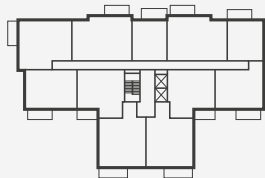
FOURTH FLOOR



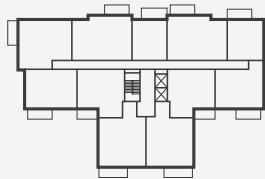
THIRD FLOOR



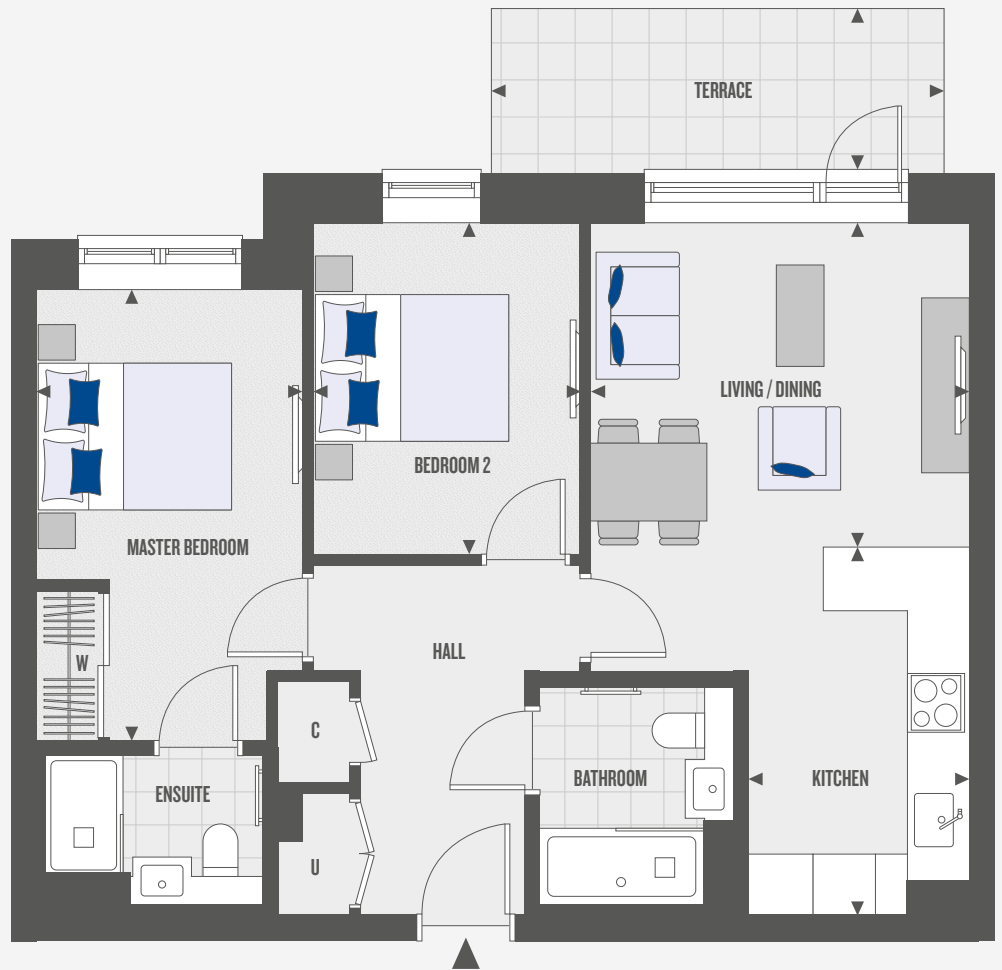
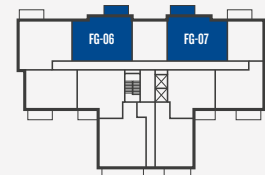
SECOND FLOOR



FIRST FLOOR



GROUND FLOOR



ROOM DIMENSIONS

| | | |
|----------------|---------------|-------------------|
| Kitchen | 2.29m x 3.77m | 7' 6" x 12' 4" |
| Living/Dining | 3.91m x 3.33m | 12' 10" x 10' 11" |
| Master Bedroom | 2.75m x 4.65m | 9' 0" x 15' 3" |
| Bedroom 2 | 2.75m x 3.41m | 9' 0" x 11' 2" |
| Terrace | 4.65m x 1.70m | 15' 3" x 5' 7" |

KEY

- ◄► Measurement Points
- W Wardrobe
- C Cupboard
- U Utility Cupboard

Floorplans shown for Union Walk are for approximate measurements only. Exact layouts and sizes may vary. All measurements may vary within a tolerance of 5% and are to the maximum room dimensions. The dimensions are not intended to be used for carpet sizes, appliance sizes or items of furniture. Furniture layouts are indicative only. Kitchen layout indicative only. Please ask Sales Executive for further information.



AT SOUTHALL
WATERSIDE

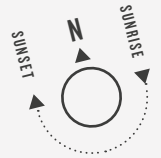
Bravey House



CLARION
HOUSING

BRAVEY HOUSE

2 BEDROOM APARTMENT



APARTMENTS

F1-06, F1-08*, F2-06, F2-08*,
F3-06, F3-08*, F4-06, F4-08*,
F5-06 & F5-08*

TOTAL AREA

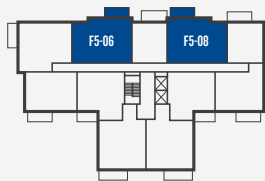
66.4 SQ M 714.7 SQ FT

BALCONY AREA

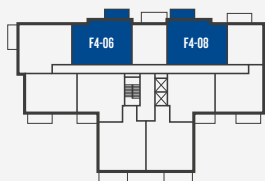
6.0 SQ M 65.2 SQ FT

*PLOTS ARE HANDED

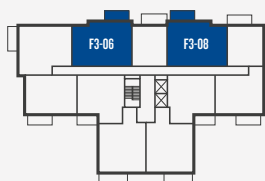
FIFTH FLOOR



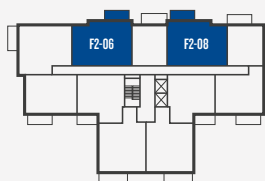
FOURTH FLOOR



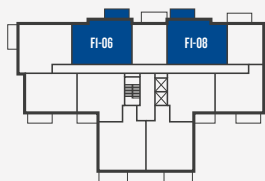
THIRD FLOOR



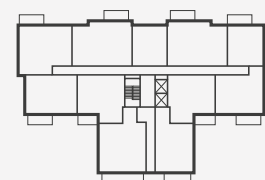
SECOND FLOOR



FIRST FLOOR



GROUND FLOOR



ROOM DIMENSIONS

| | | |
|----------------|---------------|-------------------|
| Kitchen | 2.29m x 3.77m | 7' 6" x 12' 4" |
| Living/Dining | 3.91m x 3.33m | 12' 10" x 10' 11" |
| Master Bedroom | 2.75m x 4.65m | 9' 0" x 15' 3" |
| Bedroom 2 | 2.75m x 3.41m | 9' 0" x 11' 2" |
| Balcony | 4.04m x 1.50m | 13' 3" x 4' 11" |

KEY

- ◄► Measurement Points
- W Wardrobe
- C Cupboard
- U Utility Cupboard

Floorplans shown for Union Walk are for approximate measurements only. Exact layouts and sizes may vary. All measurements may vary within a tolerance of 5% and are to the maximum room dimensions. The dimensions are not intended to be used for carpet sizes, appliance sizes or items of furniture. Furniture layouts are indicative only. Kitchen layout indicative only. Please ask Sales Executive for further information.